

Superior optical choices for the best performances

Uvi Light XTC

UV/Vis Spectrophotometer



Ultimate single beam spectrophotometer

- Powerful software for any use level
- Large high resolution graphic screen
- Huge cell compartment for any kind of sample
- Large range of accessories

SECOMAM

Find more about SECOMAM:
www.secomam.com

The best technological choices ...

Smart electronic design

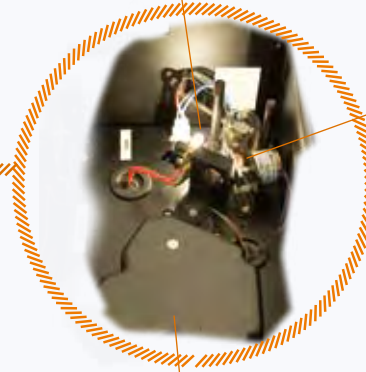
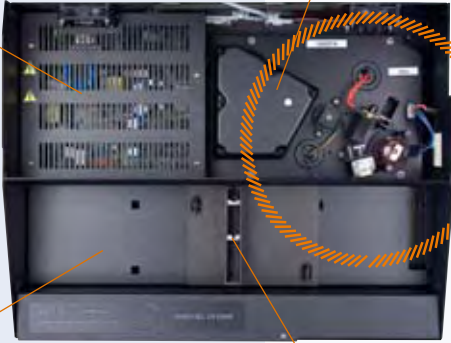
- New electronic board design
- Only one control card
- Fewer contactors, fewer connectors
- Less background noise
- Higher energy output

Compact & High Performance Monochromator

- New design with small footprint
- Holographic concave with 1200 lines/mm
- Sealed against dust

Halogen and Deuterium Lamps

- Preadjusted lamps, no tools required for replacement or adjustment
- Very continuous signal over wavelength for spectrum scanning efficiency



Light Beam Chopper

- Gives fixed light frequency
- Eliminates stray light from other sources

Large Cell Compartment

- More space for accessories settings
- Position for automatic 9-cells changer
- Drain for liquid spillage

10 to 100 mm Cell Holder

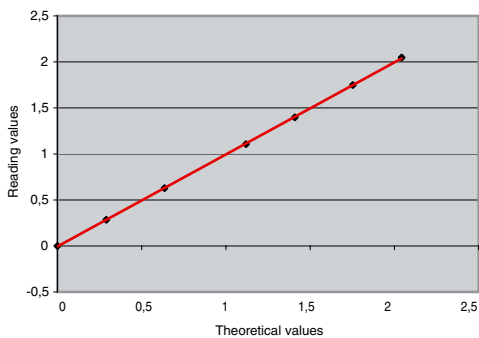
- Standard delivery
- Unique cell holder for cells up to 100 mm, no extra holders needed

Seiya Namioka Monochromator

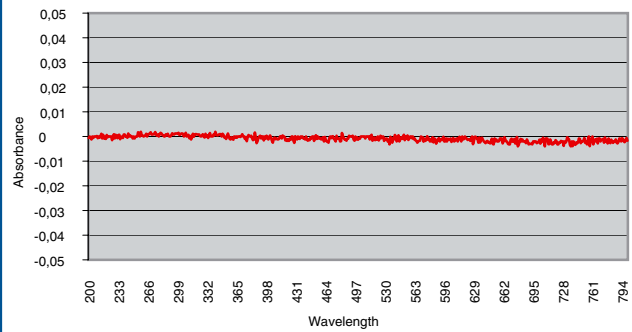
- 1200 l/mm holographic concave grating:
- High energy
- Low stray light

... for the best performances

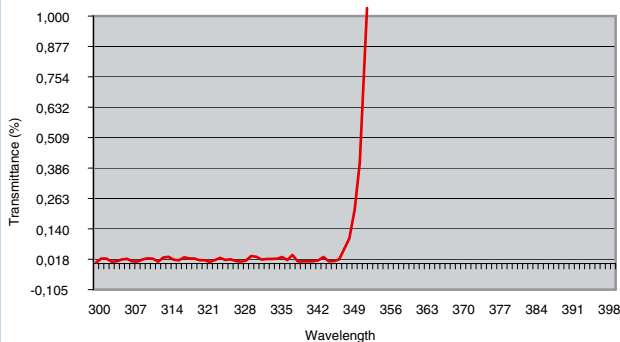
Linearity 0.99 % up to 3 Abs @ 250 nm and 540 nm



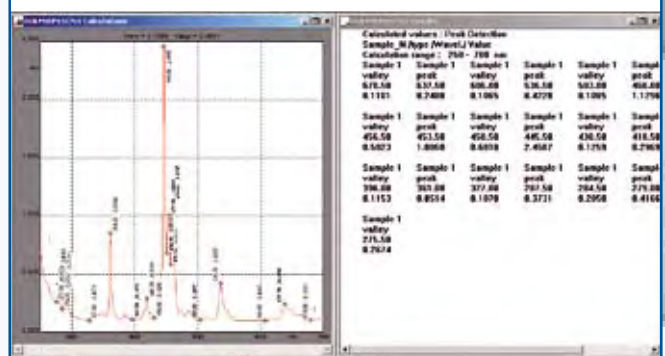
Base line reproducibility ± 0.002



Stray light better than 0.05 % @ 200 and 340



Wavelength accuracy $< \pm 1.0$ nm

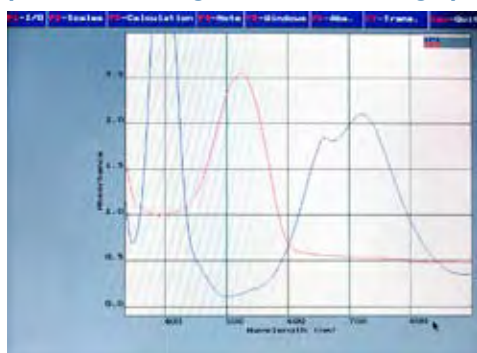


The best software/interfaces

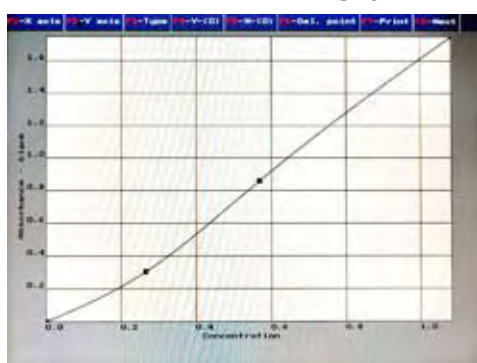
Absorbance/ Transmittance, permanent reading



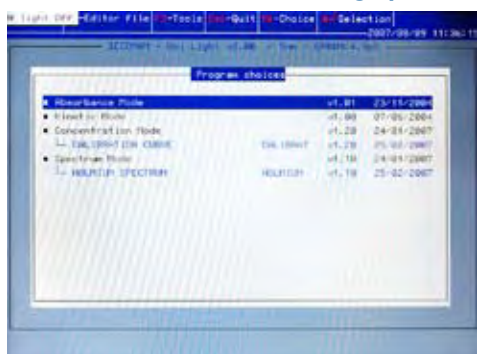
Spectrum scanning with calculation & graphic



Multi-standard concentration with graphic functions



Kinetics with calculation & graphic

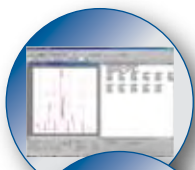


- A giant high resolution full VGA color LCD screen
- Fully programmable built-in graphic application
- Huge storage capacity: curves, 250 methods
- Optional full external Keyboard for the best ergonomy
- Macro instruction capability for time saving and automation
- Optional connection: enter the Windows world thanks to Lab Power Software
- Absorbance, permanent reading
- Multi-standard concentration with graphic functions
- Spectrum scanning with calculation & graphic
- Kinetics with calculation & graphic
- Unlimited methods programmable with hard disk
- Methods and data exportation

Designed for most of the user's applications:

- o Agro-food
- o Biotechnology
- o Chemistry & petrochemistry
- o Control labs
- o Clinical biology
- o Research
- o Teaching

A large range of accessories



70MI0510 LabPower software

The multiplatform Windows NT/2000 or XP compatible software package, LabPower provides a convenient and easy-to-use well proven software environment. Basic routine applications including control of Uvi LIGHT accessories



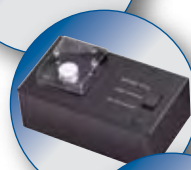
70MI0294 9 positions 10 mm cell holder

Accepts up to 9 standard 10 mm optical path cells. Requires automatic cell changer 70ST0397.



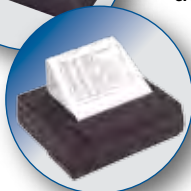
70ST0397 Automatic cell changer for 9 positions cell holder

For use with 9-cell holders 70MI0294, 70MI0159 and 70M0136. Quick and simple installation with 1/4 turn clips.



70MI0315 Aspiration system with 80 µL quartz cuvette

Automatic sample aspiration system. Delivered with peristaltic pump, 80 µl quartz flow-through cell and tubing kit.



0M8304 Black & white KYOLINE thermal printer 40 columns with cable

Technical Specifications, Configuration, Options & Accessories

Technical Specifications			
Band width	2 or 5 nm	Zero	Automatic
Spectral range	190-900 nm	Light source	Visible tungsten-halogen pre-adjusted lamp UV deuterium pre-adjusted lamp
Accuracy	±1 nm	Monochromator	Concave holographic grating
Reproducibility	±0.1 nm	Resolution	1200 lines/mm
Display resolution	1 nm (0.1 nm in spectral mode)	Detector	Silicon diode
Photometric range	0.1 to 3.000 A, 0.1 to 110 % T	Cell holder	10 to 100 mm single cell
Accuracy	±0.005 A	Interfaces	RS232C & Parallel
Drift	< 0,003 A/h at 500 nm	Power	115V/60Hz to 230V/50Hz
Stray light	< 0.4 % at 200 nm < 0.005 % at 220 and 340 nm	Dimensions	61 x 50 x 40 cm
Base line stability	±0.002 A	Weight (gross)	15 kg
Memories	250 methods	Warranty	1 year

Uvi LIGHT XTC

Advanced analysis modes
Abs/%T/Conc/Kinetics/Multiwavelength/Spectrum scanning

- Giant VGA LCD backlit display
- Parallel and RS232C connection
- PS/2 mouse
- 3"5 floppy drive
- external keyboard

70ST0557 Uvi LIGHT XTC 5 nm
70ST0527 Uvi LIGHT XTC 2 nm

Windows software

70MI0670 Windows LabPower

Cuvette holders

- 70ST0401 Round tube holder
- 70MI0159 9 position water jacketed 10mm cell holder
- 70MI0166 Water jacketed 10 mm cell holder
- 70MI0303 Peltier thermostated single cell holder
- 70MI0294 9 positions 10 mm cell holder
- 70ST0397 Automatic cell changer for 9-positions cell holder
- 70MI0315 Automatic aspiration system
- 0M8456 AZERTY alphanumeric Keyboard

Printers

0M8304 Parallel thermal printer

SECOMAM

91, avenue des pins d'Alep · 30100 Alés · France
Phone + 33 4 6654 35 60 · Fax + 33 4 6654 35 69
info@secomam.com · www.secomam.com



A Nova Analytics company NOVA ANALYTICS